



SIGN COMPLIANCE
SIGN PROJECTS
SIGN MANAGEMENT

**OFFSHORE &
MARINE**



BLOMSMA
SIGNS & SAFETY

A worker in a high-visibility yellow jacket and white hard hat is writing on a clipboard on an offshore platform. The background shows a complex industrial structure with yellow railings and various pipes. The worker is wearing a white hard hat with a logo, safety glasses, and gloves. The clipboard is held in front of him, and he is using a blue pen to write. The overall scene is an industrial offshore environment.

SIGN COMPLIANCE **SIGN PROJECTS** **SIGN MANAGEMENT**

The offshore environment is a world of extremes. Harsh weather conditions, working with chemicals, compact construction and influences of saltwater imposes many risks. These risks must be managed to increase overall Safety. Safety signage helps to identify possible risks and contributes to the safety of people. The harsh environment imposes very high demands on the safety signage. Blomsma Signs & Safety has a long tradition in the offshore and marine sector and provides signage solutions for many decades. It is a world of extremes that we know well.

E-ROOM 2



Electrical hazard



Do not
extinguish with water



Authorized personnel only.

Unauthorized presence constitutes a breach of security.

Safety signage

Increasing safety awareness using safety signage as a system

There are various aspects of safety signage in terms of purpose, use, types and necessity. And each sector has its own typical demands to safety signage. However, many aspects have overlapping starting points and similar philosophies. These are determined in law and legislation and best practices. Safety signage is vital in the workplace to ensure the safety of our workers, installation and environment. One of the most effective ways to communicate is through images. International legislations provide a range of standardized safety symbols or a guideline to create safety symbols, ensuring a clear interpretation of the opposed message in a uniform style.

Phosphorescent signs

Emitting light in case of sudden light failure or black-out



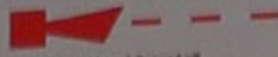
Signage is only effective if it is visible. Through the use of different signs, this effect can be enhanced. But the type of signage plays an even bigger role. Indoors, it is preferable to use phosphorescent (afterglow) materials. In emergency situations where there is a sudden light failure or black-out, the phosphorescent signs emit light for periods of time. Phosphorescent material has the ability to hold energy, this is visible during light outages. Without an external power source, this is an ultimate solution to implement an adequate signage system.

ESCAPE PLAN

General Platform Alarm (GPA)



Flashing light in noisy areas



Tone: 1 Second on, 1 Second off

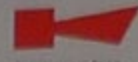


Proceed to your designated Muster Point on hearing GPA

Prepare to Abandon Platform Alarm (PAPA)



Flashing light in noisy areas

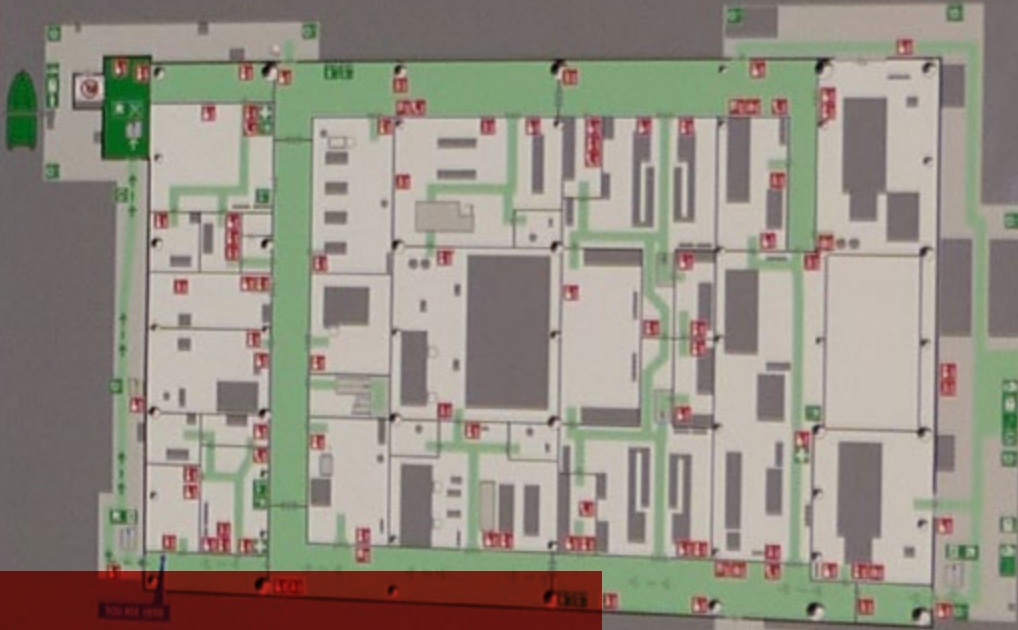


Continuous tone



Proceed to your Freefall Lifeboat station unless directed otherwise by the OIM

- Fire equipment
 - Manual call station
 - Fire hose reel
 - Fire extinguisher
 - Abandon the extinguisher
 - Emergency telephone
 - Fire blanket
 - Do not use extinguisher in areas of fire
- Personal equipment
 - Fire suit
 - Emergency shelter
 - Eye wash bottle
 - Escape mask
 - Respiratory apparatus
 - Rescue line
 - Shovel
 - Library with light
 - Library with light and mirror
 - Hydrant
 - Waterproof cap
 - Resuscitating device



Orientation beforehand

Escape Plans not only for emergency situations

| In case of fire Sound alarm | In case of accidents Sound alarm | In case of emergency Sound alarm |
|--|--|---|
| <p>1. Report alarm</p> <p>2. Bring to safety</p> <p>3. Bring to safety</p> <p>4. Bring to safety</p> | <p>1. Report accident</p> <p>2. Check all</p> <p>3. Further assistance</p> | <p>1. Report alarm</p> <p>2. Check assistance</p> <p>3. Bring to safety</p> |

Regardless of a person's location on a ship or offshore installation, rapid evacuation must always be possible. Unambiguous communication in the escape route marking under every circumstance is extremely important. It must always be possible to find and recognize the various applicable escape routes at a glance. In addition to an escape route marking system, comprehensive escape plan signboards help to orientate in controlled and uncontrolled situations.



Low Location Lighting

Light the way to safety

In the offshore and maritime sector, escape route guidance systems (low location lighting) are implemented to improve the visibility of escape routes within a vessel or installation. In a fire, the smoke that develops rises because of the heat. Escape route marking placed higher up will be rendered invisible by the smoke. The ideal escape route guidance system is therefore applied close to the floor. There are various rules and standards for escape route guidance systems. Proper interpretation and correct use of these guidelines ensure that the escape routes can be clearly seen, even during evacuation in the dark.



Durable marking for your pipes

Information carriers that last for years,
on top of the legal requirements

Marking pipes carrying hazardous substances is prescribed by legislation and regulations. The primary purpose, though, is to raise the level of safety by providing correct and up-to-date information. Markings also help to operate efficiently, by depicting information that helps operators and maintenance staff to recognize systems more quickly and prevent mistakes. Blomsma Signs & Safety handles complete pipeline marking projects in which you can rely on the durability of the markings applied. Our PolyPro® pipeline marking is produced in line with the 3M™ requirements and applied by our 3M™ Certified Sign Installers.

Anti-slip solutions

Reducing the risks of slips and falls

It is a fact: slips and falls account for 35% of all working days lost due to injuries. And what is more troubling is that accidental falls are one of the most commonest causes of death at the workplace. Along with painting and grinding solutions, anti-slip covers are a proven concept. They are designed with a long-lasting grit surface that provides a non-corrosive and impact resistant covering layer. They are field-proven in extremely wet, icy, oily, corrosive and dusty conditions and can be used for a wide range of solutions, such as step covers, walkway covers, drill floor covers, etc.



Interior decorations

Make your workspace come alive

From solutions for glass facades, doors, partitions, pillars, ceilings and walls, Blomsma Signs & Safety offers practical ingenious solutions that make workspaces come alive. Our materials offer quick and efficient refurbishment systems, with simple and economical post-installation maintenance. Every surface becomes a potential project. From graphical themes matching your brand guidelines to full colour, floor-to-ceiling prints, we can provide you with the right product and installation.



Stand for quality and safety

We understand your situation and its challenges

We see safety signage as a fundamental part of safety. It is something that people should be able to rely on. Signage must be properly implemented, not only in terms of proper materials but also the way of installation. Our trained and certified teams understand that they are one aspect of safety on site for you, and the role that they have in that regard. By understanding your situation, we can provide the best possible solutions.

OUR SERVICES

TPS - Total Project Service

Our Total Project Service starts with an inventory that is conducted by specialists with a vast amount of experience in the industry. A site visit is made to determine what signage is needed and in what form and using which materials. The inventory results are translated into sign plans by our draftsmen. A management system that is linked directly to the sign drawings gives a clear picture of the costs of making and fitting the specified signage. Bundling all the plans together creates a sign manual that is the foundation for discussions with all parties involved, the definitive implementation and ultimately even a maintenance plan. The TPS method lets Blomsma Signs & Safety guarantee that you will comply with current legislation and regulations at the moment the project is delivered.

SPS - Signage Pit-Stop Service

A quick service for updating the safety signage system for ships and offshore rigs, based on provided safety plans. Blomsma provides the standard safety signs and/or pipe marking and installation on site.

Signpackages and Signmanuals

Blomsma offers the possibility to order signpackages, optionally with a desktop engineered signplan for global deliveries. Based on a provided Safety Plan a signplan is drafted accompanied with installation instructions.

Low Location Lighting surveys

Blomsma Signs & Safety provides Low Location Lighting surveys according to SOLAS, IMO Resolution A752(18), ISO-15370 or specific (Navy)standards. Our surveyors execute a performance measurement of the phosphorescent material and inspect if the low location lighting system is complete. Blomsma Signs & Safety is a DNV certified service supplier (Certificate AOSS00000MM).

3M™ Platinum Graphic Select Provider™

Blomsma is a 3M™ Platinum Graphic Select Provider™. That is the highest achievable level for suppliers in the signage market. This means that Blomsma Signs & Safety is allowed to provide guarantees independently on behalf of 3M™. These guarantees are given for the materials, the production and the assembly/mounting. What this means for you is the optimum project guarantee and complete certainty.

Our customers include:



HEAD OFFICE

Blomsma Signs & Safety Zoetermeer

Storkstraat 1-3
2722 NN Zoetermeer
The Netherlands

+31 (0)79 330 10 90
signs.safety@blomsma.eu

Blomsma Signs & Safety Hoogezand

Julianastraat 14
9601 LR Hoogezand
The Netherlands

+31 (0)79 711 28 03
signs.safety@blomsma.eu

Blomsma Signs & Safety GmbH

August-Wilhelm-Kühnholz-Straße 52
26135 Oldenburg
Germany

+49 (0)170 198 1600
signs.safety@blomsma.de



Visit our website:

BLOMSMA-SAFETY.COM

© COPYRIGHT BLOMSMA SIGNS & SAFETY B.V. - all rights reserved



**BLOMSMA
SIGNS&SAFETY**